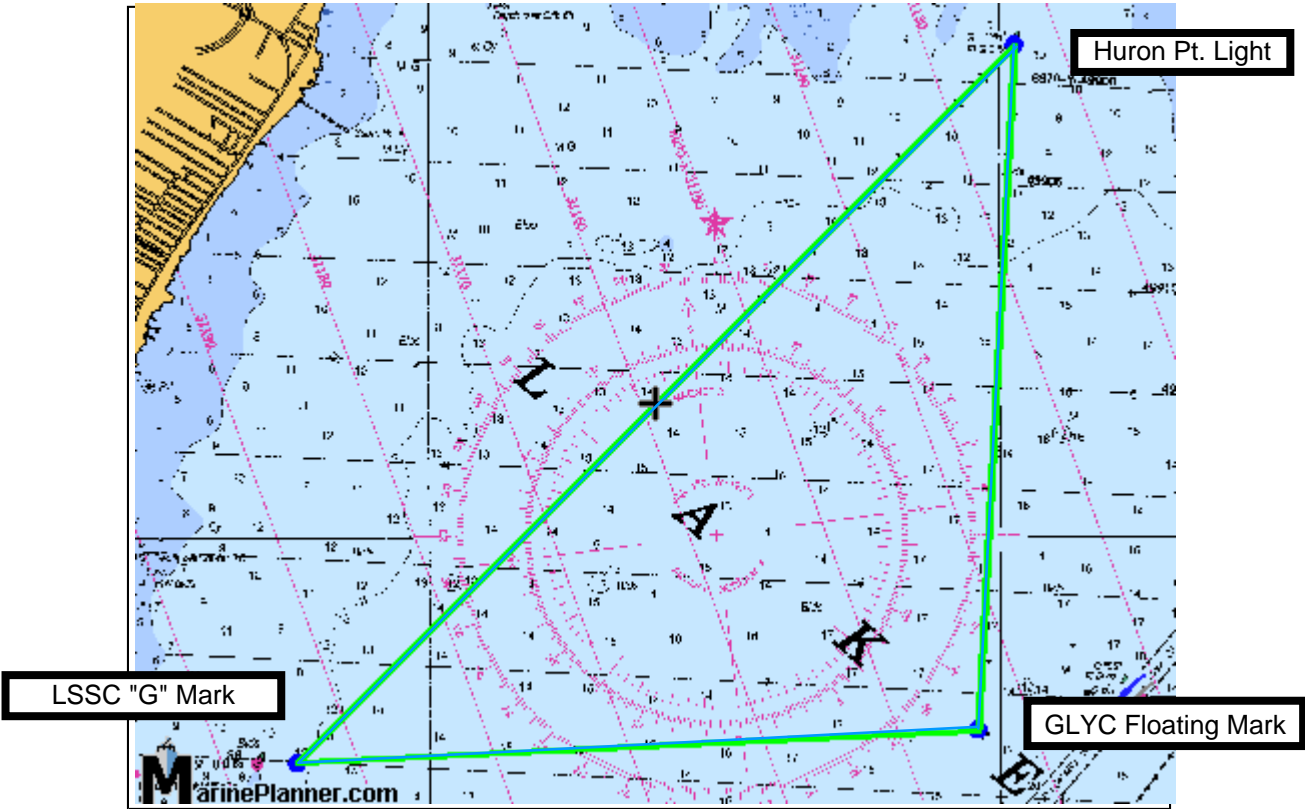


June 9, 2007 Single-handed/Doublehanded Course

Marks to Starboard

- LSSC "G" Mark
- Huron Pt. Light
- GLYC Floating Mark
- LSSC "G" Mark

Location	Course	Mag Crs	Distance	Total
42 28 32.04N 82 51 10.35W	45°	52°	6.6 nm	6.6 nm
42 33 11.36N 82 44 52.72W	183°	191°	4.5 nm	11.1 nm
42 28 44.45N 82 45 12.82W	267°	275°	4.4 nm	15.5 nm
42 28 32.04N 82 51 10.35W	Great circle distance: 0 nm.			



Marks to Port

- LSSC "G" Mark
- GLYC Floating Mark
- Huron Pt. Light
- LSSC "G" Mark

Location	Course	Mag Crs	Distance	Total
42 28 32.04N 82 51 10.35W	87°	95°	4.4 nm	15.5 nm
42 28 44.45N 82 45 12.82W	3°	11°	4.5 nm	11.1 nm
42 33 11.36N 82 44 52.72W	225°	232°	6.6 nm	6.6 nm
42 28 32.04N 82 51 10.35W	Great circle distance: 0 nm.			

- 42 28.534N 82 51.173W
- 42 28.741N 82 45.214W
- 42 33.189N 82 44.879W
- 42 28.534N 82 51.173W