

# LEUKEMIA CUP REGATTA

## CRUISING CLASS SAILING INSTRUCTIONS

- 1. Entry:** This race is open to all boats registered for the Leukemia Cup Regatta on May 15, 2009 and indicating the "Cruising Class". It will be a Jib and Main (JAM) only race.
- 2. JAM CLASS REQUIREMENTS** - No spinnakers, stay sails, double head rigs, or whisker/spinnaker poles longer than the "J" measurement are allowed.
- 3. Starting:** The goal is to cross the starting line at the scheduled starting time as noted for your class. The warning signal for the first start will be given at 1055 hrs on May 16, 2009. The class you are in is noted on the "Class Splits" available at Great Lakes Yacht Club after 1800 hours May 14, 2009. You must handle your boat so that you do not cross the starting line before your start. If you do the Race Committee will display a code flag "X" and make a sound signal. You must restart after avoiding all other starters.

**Class Designation** – Classes will be designated by numbers 1, 2, 3, 4 etc. Starts will be by number flags on the Race Committee boat.

### Starting Sequence –

- 6 Min Repetitive Sound (Horn) – Attention Sound
- 5 Min Gun – Class #1 Flag is raised
- 4 Min Gun – Prep "P" Flag is raised (White w/Blue Square)
- 1 Min Horn – Prep "P" Flag is lowered
- 1<sup>st</sup> Start Gun** – Class #1 Flag is lowered, Class #2 Flag is raised.
- + 1 Min Gun – Prep "P" Flag is raised (White w/Blue Square)
- + 4 Min Horn – Prep "P" Flag is lowered
- 2<sup>nd</sup> Start Gun** – Class #2 Flag is lowered, Class #3 Flag raised  
(If needed) Repeat Sequence for all classes

These signals may be accompanied with a sound signal (either a shotgun or a horn)

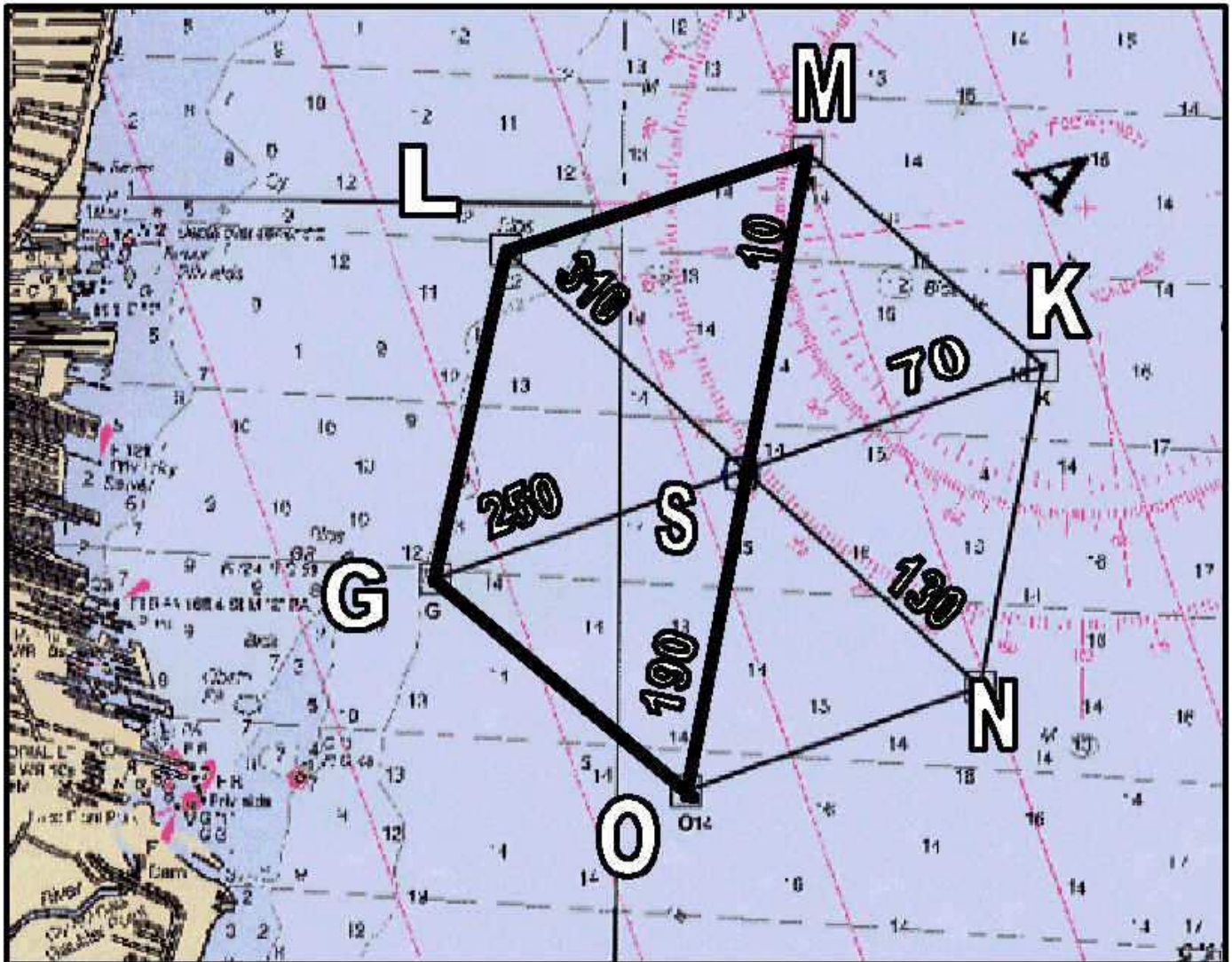
- 4. The Course:** The starting mark "G" is located approximately .4 NM East of the Gaulker Shoal buoy GR, Lat Long coordinates 42° 28.50'N 82° 51.00'W. The Race Committee boat will set up with "G" mark to Starboard. The starting line is between "G" mark and the RC flag on the committee boat.

The course will be a 6.5 nautical mile Trapezoid identified by marks "G", O, M, and L and finishing at "G", see diagram. You must round each mark leaving it on your port side. Imagine the wake of your boat is a string; this string must go around the outside of each mark and enclose the entire course.

- 5. The Rules:** This race will be governed by the current racing rules of the International Yacht Racing Union as adopted by the United States Sailing Association. The US Sailing Assoc. publishes "**THE RACING RULES OF SAILING 2009-2012.**" This book is a comprehensive set of yacht racing rules developed over the past 120 years. It is the rule book for all yacht races throughout the world. It can be difficult to easily understand. Please read the "THE RACING RULES OF SAILING 2009-2012" if possible, but to help simplify the rules we have compiled a list of the basics, as follows;

- Avoid contact with another boat as all costs; no race is worth damaging your boat.
  - A boat on Starboard tack (wind coming over the right side) always has the right of way. Get out of this boats way if your courses are converging.
  - A boat to windward of another must keep clear.
  - An overtaking boat must keep clear.
  - You must not touch a mark with any part of your boat, including the crew.
  - The inside boat at a mark rounding must be given enough room to round the mark.
  - If there is any question let the other boats know your intentions, yell it out so they can hear, if they don't understand or hear you, and stay clear of them.
  - Always keep a close lookout for the location and direction of the other boats, there is no excuse for not being able to see around your sail, post a lookout if necessary.
  - Stay out of the starting area until 5 minutes before your classes start
  - Move out of the finishing area after you finish.
  - Be conscious of the other sailors' inexperience; give 'em a break, this is supposed to be fun.
  - Have a good time.
6. **PHRF RATING RULE** - Yachts sailing in the Cruising Class shall have a handicap based on Performance Handicap Racing Fleet (PHRF) procedure, the Race Committee may assign a handicap to unrated yachts consistent with PHRF policy. The Race Committees' decision is final.
7. **RADIO MONITORING** - Please monitor channel 71 from preparatory signal to finishing
8. **TIME LIMIT** - The time limit for each class shall be three (3) hours after its starting signal. One yacht finishing within the time limit extends the time limit for that class. Yachts finishing after the RC boat has left station shall record their own time when passing the finish mark and, upon docking, shall promptly report same to the race chairman at GLYC.
9. **AWARDS** - Awards ceremonies will be held at GLYC around 8:00 pm on race day. Scoring for class and overall finishes will be based on low point, i.e., 3/4 pt for 1<sup>st</sup>, 2 pt for 2<sup>nd</sup>, 3 pt for 3<sup>rd</sup>, and so on. Even will be scored with finish times adjusted using Time on Time.
10. **Advertising:** This race is categorized as a Class B event. Please read the details in “**THE RACING RULES OF SAILING 2009-2012.**” In effect, this means that boats registered for the Leukemia Cup may display advertising, for their sponsors only, on their boats. Boats not registered for the Leukemia Cup may not display advertising and may be disqualified if they do so.

# Leukemia Cup – Cruising Course



All Segments Approximately 1.3 nm Headings Approximate & Magnetic Course

Course is G – O – M – L – G

Lon/Lat of marks

G	N 42° 28.500' W 82° 51.000'
O	N 42° 27.660' W 82° 49.630'
M	N 42° 30.220' W 82° 48.990'
L	N 42° 29.810' W 82° 50.620'
G	N 42° 28.500' W 82° 51.000'