



Great Lakes Yacht Club

2022 Fall Series Sailing Instructions



FLAG OFFICERS

Commodore	Don Fiander
Vice Commodore	Paul Krietsch
Rear Commodore	Jeff Forster
Secretary	Rob Fleming
Treasurer	Paul Looch

DRYA ADVISOR & PROTEST CHAIRPERSON

Com. Ed Theisen

PRINCIPAL RACE OFFICER

TBD

RACE COMMITTEE (RC)

Jim Rapelje (Co-Chair)	Jeff Golding (Co-Chair)
Com. Dave Parkes	Com. Mike McGuire
Com. Barney Mathie	Com. Frank Stellingwerf
Steve Haley	

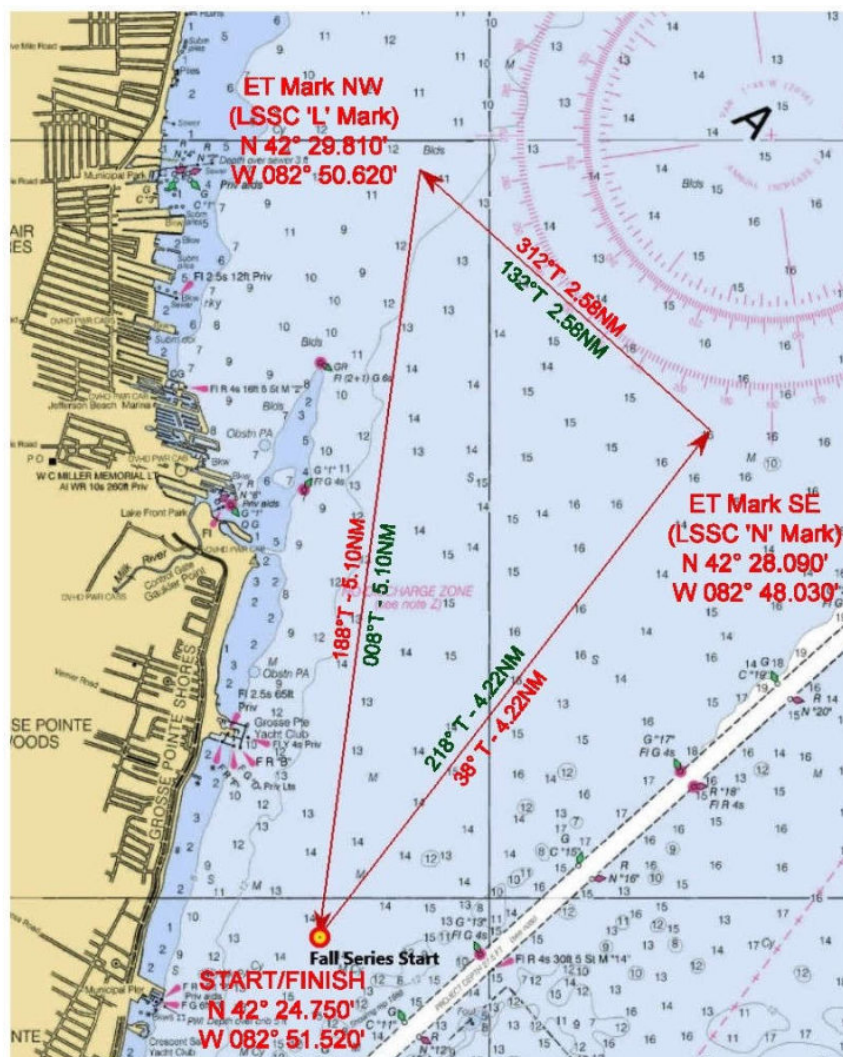
Monitor Channel 71

- RULES** – Great Lakes Yacht Club (GLYC) is the Organizing Authority (OA) for the series. This regatta will be governed by the US Sailing 2021-2024 Racing Rules of Sailing (RRS), and the 2022 GLYC Fall Series Sailing Instructions.
- CHANGES TO THE SAILING INSTRUCTIONS (SI's)**: Any changes to the 2022 GLYC Fall Series SI's will be posted by 6pm on www.greatlakesyc.com/fall-series the day before it will take effect.
- AGREEMENT TO ASSUME RISK** – In consideration of being permitted to enter this regatta and being fully knowledgeable of the risks of sailing as a competitive sport, all competitors, crew members and guests aboard voluntarily assume all risks associated with participating in this regatta. Competing boats shall in all respects be ready for sea and sailed by an adequate and capable crew. It shall be the sole and inescapable responsibility of the skipper and crew of the boat to decide whether to start or continue a race. The skipper must assure that all equipment required by the United States Coast Guard, as well as other necessary safety equipment, is aboard and properly maintained and stowed and that the crew knows where it is kept and how it is used.
- TRASH DISPOSAL** – RRS 47 is changed to read as follows: A competitor shall not intentionally put trash in the water. However, discarding elastic or wool bands when setting a sail is permitted.
- IDENTIFICATION** – Boats should carry proper sail numbers on mainsails, spinnakers and any sails attached to the headstay that have a luff perpendicular exceeding 130% of the base of the foretriangle.
- If there is a discrepancy between the NOR and Sailing Instructions, the Sailing Instructions shall prevail.
- COURSES, MARKS and RACE DATES**
 - THE COM. ED THEISEN TROPHY RACE** – Race 1 – **Sunday, October 2, 2022**
 - The approximate location of the starting area is 42° 24.750' North, 82° 51.520' West.
 - COURSE LENGTH**: Approximately 11.9 nautical miles.
 - The Start/Finish line shall be between a staff displaying an orange flag on the Starting Line Signal Boat at the starboard end and an orange inflated pyramid at the port end. Both **ET Mark NW** (N42°29.810'-W082°50.620) and **ET Mark SE** (N42°28.090'-W082°48.030') are 8" PVC vertical pipe. **ET Mark NW** is labeled 'L' and **ET Mark SE** is labeled 'N'. Locations are approximate. Boats shall finish from the direction of the last mark and between an orange flag on the Race Committee Signal Boat and an orange inflated pyramid.
 - MARKS TO STARBOARD** A Green flag displayed on the Signal Boat. From Start/Finish line proceed to the ET Mark NW then to ET Mark SE then to the finish.
 - MARKS TO PORT** A Red flag displayed on the Signal Boat. From Start/Finish line proceed to ET Mark SE then to ET Mark NW then to the finish. Course length approximately 11.9nm.
 - WINDWARD/LEEWARD RACES** – **Sunday Oct. 9th and Sunday Oct. 16th**
 - COURSE LOCATION** – The approximate location is 42° 24.75' North, 82° 51.52' West (Center of DRYA 'A' Course Circle).

- ii. **COURSES & MARKS** – All windward/leeward races shall be sailed on a 4-leg course. Distances are approximate and in nautical miles (nm). The starting line signal boat may display a placard showing the approximate magnetic bearing to the first mark prior to the warning signal for the start of the first class. Except as provided in Sailing Instruction 12, all rounding marks are orange inflated pyramids. All marks shall be rounded to port. The leeward mark will be an orange inflated pyramid at the port end of the starting line.
 - iii. **STARTING AREA** –The Race Committee (RC) will anchor within the course circle approximately one hour before the warning signal for the first start. The RC will attempt to advise the lat/long position of the starting area at their earliest opportunity, on channel 71.
 - iv. **START LINE** – The starting line shall be between a staff displaying an orange flag on the Starting Line Signal Boat at the starboard end and an orange inflated pyramid at the port-end.
 - v. **FINISH LINE** – Boats shall finish from the direction of the last mark and between an orange flag on the Race Committee Signal Boat and an orange inflated pyramid finish mark.
 - vi. **COURSE LENGTH** –The Starting Line Signal Boat will display the approximate distance from the starting line to the first mark in nautical miles prior to the warning signal for the start of the first class.
- 8. STARTING** – Races will be started using RRS 26. The warning signal for the first class will be at 1055 hours. Attention Signal – The RC may make a series of short sound signals approximately one minute before the warning signal for the first class.
- 9. ORDER, NUMBER OF STARTS AND CLASS FLAG** – Will be shown on the ‘Fall Series Class Splits’ posted on www.greatlakesyc.com/fall-series by Friday, Sept 30, 2022. The ‘Class Splits’ may also be posted on www.DRYA.org.
- 10. LIMIT MARKS** – One or more limit marks (a red and green buoy) may be set near the Starting Line Signal Boat and/or the Race Committee boat on station for starts and finishes. A boat shall not touch a limit mark or sail between a limit mark and the Signal Boat or Race Committee boat.
- 11. INDIVIDUAL RECALLS** – In addition to signaling in accordance with RRS 29.1, the Race Committee may hail, and/or announce by VHF radio channel 71 the sail numbers of boats subject to individual recall. The failure to do so, an incorrect or late hail or announcement or the order in which sail numbers are hailed or announced shall not be grounds for redress. This changes RRS 62.1.
- 12. CHANGE OF COURSE AFTER ALL STARTS**– (a) A change of course will be signaled in accordance with RRS 33. The new mark will be yellow, but subsequent course changes will alternate between orange and yellow marks.
- 13. TIME LIMIT**
- a. Com. Ed Theisen Trophy Race (Race 1): 4.5 hours from the class starting signal.
 - b. Windward/Leeward Races (Races 2 to 5): 2.5 hours from the class starting signal.
- 14. PROTESTS** All written protests shall be emailed to the GLYC Race Committee at greatlakesyachtclub@gmail.com within 2 hours of the finishing time of the last boat to finish. A pdf copy of the US Sailing 2021-2024 Protest Form is available at www.greatlakesyc.com/fall-series. The Race Committee will inform the participants of the time and place of the Protest Hearing.
- 15. SCORING** – PHRF Races will be scored Time on Time. The series overall will be for all races, scored for PHRF classes only using the Low Point System of RRS Appendix A. One race completed shall constitute a series. There shall be one throw out race if more than four races are completed.
- 16. COURTESY BROADCASTS** – An unofficial designated observer may report all visual signals displayed by the RC over the VHF channel 71. Information so reported is provided as a courtesy to competitors and does not alter the competitors’ responsibility to observe the RC’s visual signals, which govern the conduct of the racing. Errors or omissions by the observer, or a competitor’s failure to hear an observer’s report, will not be grounds for granting redress.
- 17. CHANGES TO THE SAILING INSTRUCTIONS** - Changes to the 2022 GLYC Fall Series SI’s will be posted by 6pm on www.greatlakesyc.com/fall-series the day before it will take effect. When SIs are amended the changes will be shown in RED on the revised document. Additionally, the Race Committee may communicate changes to the SIs over VHF Channel 71 and/or verbally when Code Flag “L” is displayed on the Signal Boat and before that class warning signal. Ref: Rule 90.2”.

Com. Ed Theisen Trophy Race

COURSE DIAGRAM - RACE #1 (ONLY)



Awards will be presented at the '**END OF SEASON PARTY**' at GLYC on Saturday, October 29th, from 2-4pm. An award will be presented for the best Halloween Costume Contest, as judged by the Race Committee. Food (cash only) and complementary soft drinks will be available. Sailors and guests are welcomed to BYOB.

COME AND ENJOY A GREAT END OF SEASON RACE SERIES

Great Lakes Yacht Club
23900 Jefferson Avenue
St. Clair Shores, Michigan 48080
(586) 778-9510 - greatlakesyachtclub@gmail.com
www.greatlakesyc.com