



Great Lakes Yacht Club

2024 Fall Series Sailing Instructions



FLAG OFFICERS

Commodore	Jeff Forster
Vice Commodore	Rob Fleming
Rear Commodore	Michael Banks
Secretary	Steve Murdock
Treasurer	Carol Walker

DRYA ADVISOR & PROTEST CHAIRPERSON

Com. Ed Theisen

PRINCIPAL RACE OFFICERS

Danielle Templeton

RACE COMMITTEE (RC)

Bob Mann (Chair)	Jeff Golding (Series Chair)
Barney Mathie	Com. Mike McGuire
Com. Dave Parkes	Jim Rapelje
Tom Scherr	Jacob Spinks
Rebecca Spinks	Com. Frank Stellingwerf

Monitor Channel 71

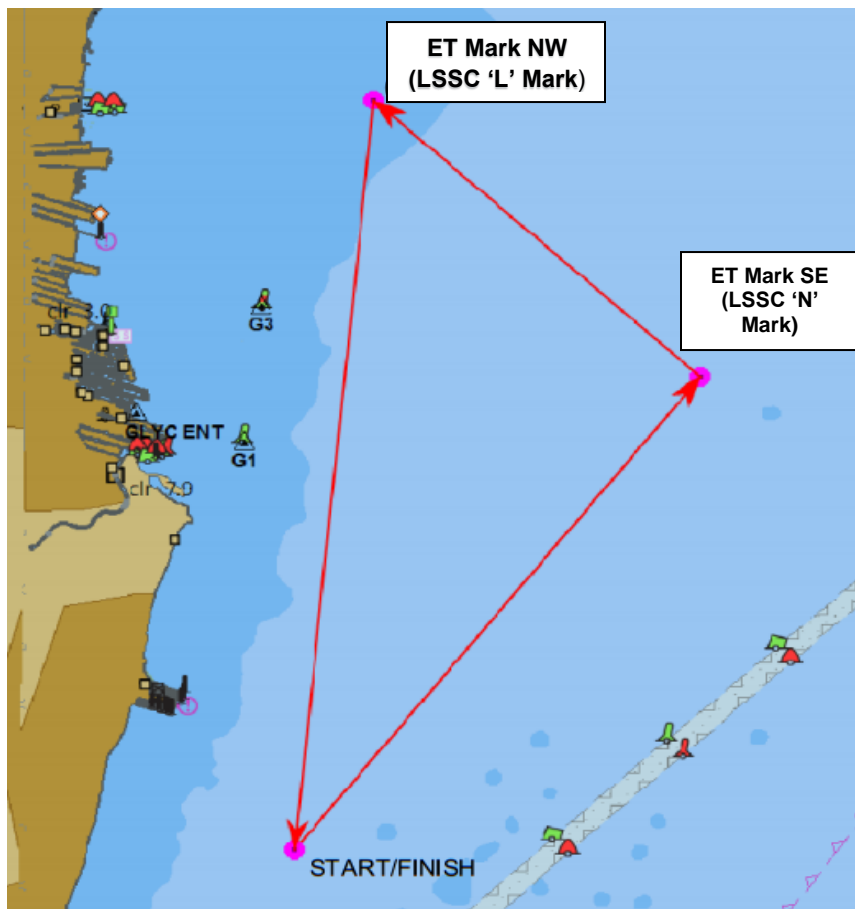
- RULES** – Great Lakes Yacht Club (GLYC) is the Organizing Authority (OA) for the series. This regatta will be governed by the US Sailing 2021-2024 Racing Rules of Sailing (RRS), and the 2024 GLYC Fall Series Sailing Instructions.
- CHANGES TO THE SAILING INSTRUCTIONS (SI's)**: Any changes to the GLYC Fall Series SI's will be posted by 6pm on www.greatlakesyc.com/fall-series the day before it will take effect. When SIs are amended the changes will be shown in RED on the revised document. Additionally, the Race Committee may communicate changes to the SIs over VHF Channel 71 and/or verbally when Code Flag "L" is displayed on the Signal Boat and before that class warning signal. Ref: Rule 90.2.
- AGREEMENT TO ASSUME RISK** – In consideration of being permitted to enter this regatta and being fully knowledgeable of the risks of sailing as a competitive sport, all competitors, crew members and guests aboard voluntarily assume all risks associated with participating in this regatta. Competing boats shall in all respects be ready for sea and sailed by an adequate and capable crew. It shall be the sole and inescapable responsibility of the skipper and crew of the boat to decide whether to start or continue a race. The skipper must assure that all equipment required by the United States Coast Guard, as well as other necessary safety equipment, is aboard and properly maintained and stowed, and that the crew knows where it is kept and how it is used.
- TRASH DISPOSAL** – RRS 47 is changed to read as follows: A competitor shall not intentionally put trash in the water. However, discarding elastic or wool bands when setting a sail is permitted.
- IDENTIFICATION** – Boats should carry proper sail numbers on mainsails, spinnakers and any sails attached to the headstay that have a luff perpendicular exceeding 130% of the base of the foretriangle.
- If there is a discrepancy between the NOR and Sailing Instructions, the Sailing Instructions shall prevail.
- COURSES, MARKS and RACE DATES**
 - THE COM. ED THEISEN TROPHY RACE & POINT-TO-POINT RACE** – Races 1 & 5 – Sunday, September 29, and Saturday, October 26:
 - The approximate location of the starting area is 42° 24.750' North, 082° 51.520' West (Center of DRYA 'A' Course Circle).
 - COURSE LENGTH**: Approximately 11.9 nautical miles.
 - The Start/Finish line shall be between a staff displaying an orange flag on the Starting Line Signal Boat at the starboard end and an orange inflated pyramid at the port end. Both **ET Mark NW** (N42°29.810'-W082°50.620') -- labeled 'L' -- and **ET Mark SE** (N42°28.090'-W082°48.030') -- labeled 'N' -- are white. Locations are approximate. Boats shall finish from the direction of the last mark and between the orange flag on the Race Committee Signal Boat at the port line end and an orange inflated pyramid to starboard.
 - For race 5, **and possibly race 1**, ET Mark SE and ET Mark NW will be replaced by orange inflated pyramids.

- iv. **MARKS TO STARBOARD** A Green flag displayed on the Signal Boat. From Start/Finish line proceed to the ET Mark NW then to ET Mark SE then to the finish.
 - v. **MARKS TO PORT** A Red flag displayed on the Signal Boat. From Start/Finish line proceed to ET Mark SE then to ET Mark NW then to the finish. Course length approximately 11.9nm.
- b. **WINDWARD/LEEWARD RACES** – Sundays, October 6, 13, and 20:
- i. **COURSE LOCATION** – The approximate location is 42° 24.75' North, 082° 51.52' West (Center of DRYA 'A' Course Circle).
 - ii. **COURSES & MARKS** – All windward/leeward races shall be sailed on a 4-leg course. Distances are approximate and in nautical miles (nm). The starting line signal boat may display a placard showing the approximate magnetic bearing to the first mark prior to the warning signal for the start of the first class. Except as provided in Sailing Instruction 12, all rounding marks are orange inflated pyramids. All marks shall be rounded to port. The leeward mark will be an orange inflated pyramid at the port end of the starting line.
 - iii. **STARTING AREA** –The Race Committee (RC) will anchor within the course circle approximately one hour before the warning signal for the first start. The RC will attempt to advise the lat/long position of the starting area at their earliest opportunity, on channel 71.
 - iv. **START LINE** – The starting line shall be between a staff displaying an orange flag on the Starting Line Signal Boat at the starboard end and an orange inflated pyramid at the port-end.
 - v. **FINISH LINE** – Boats shall finish from the direction of the last mark and between an orange flag on the Race Committee Signal Boat and an orange inflated pyramid finish mark.
 - vi. **COURSE LENGTH** –The Starting Line Signal Boat will display the approximate distance from the starting line to the first mark in nautical miles prior to the warning signal for the start of the first class.
- 8. STARTING** – Races will be started using RRS 26. The warning signal for the first class will be at 1055 hours. Attention Signal – The RC may make a series of short sound signals approximately one minute before the warning signal for the first class.
- 9. ORDER, NUMBER OF STARTS AND CLASS FLAG** – Will be shown on the 'Fall Series Class Splits' posted on www.greatlakesyc.com/fall-series by Friday, Sept 27. The 'Class Splits' may also be posted on www.DRYA.org.
- 10. LIMIT MARKS** – One or more limit marks (a red and green buoy) may be set near the Starting Line Signal Boat and/or the Race Committee boat on station for starts and finishes. A boat shall not touch a limit mark or sail between a limit mark and the Signal Boat or Race Committee boat.
- 11. INDIVIDUAL RECALLS** – In addition to signaling in accordance with RRS 29.1, the Race Committee may hail, and/or announce by VHF radio channel 71 the sail numbers of boats subject to individual recall. The failure to do so, an incorrect or late hail or announcement or the order in which sail numbers are hailed or announced shall not be grounds for redress. This changes RRS 62.1.
- 12. CHANGE OF COURSE AFTER ALL STARTS**– (a) A change of course will be signaled in accordance with RRS 33. The new mark will be yellow, but subsequent course changes will alternate between orange and yellow marks.
- 13. TIME LIMIT**
- a. Com. Ed Theisen Trophy Race and Point-to-Point Race (Races 1 & 5): 4.5 hours from the class starting signal.
 - b. Windward/Leeward Races (Races 2 to 4): 2.0 hours from the class starting signal.
- 14. PROTESTS** All written protests shall be emailed to the GLYC Race Committee at GLYCRace@gmail.com within 3 hours of the finishing time of the last boat within your class to finish the last race of the day. A pdf copy of the US Sailing 2021-2024 Protest Form is available at www.greatlakesyc.com/fall-series. The Race Committee will inform the participants of the time and place of the Protest Hearing.
- 15. SCORING** –Races will be scored Time on Time. The series overall will be for all races, scored for PHRF classes only using the Low Point System of RRS Appendix A. One race completed shall constitute a series. There shall be one throw out race day if more than four days of races are completed.
- a. For days with multiple races, ties will be broken by summing the elapsed sailing time of all that day's races, only for each boat involved in the tie.
 - b. Series ties will be resolved by who had the greater number of 1sts (per day, not per race), then 2nds, etc. If there is still a tie, then the finish order on the latest race day (not individual race if multiple races in one day) where all tied boats all raced shall be the finishing order. Any boats still tied shall remain tied.

16. COURTESY BROADCASTS – An unofficial designated observer may report all visual signals displayed by the RC over VHF channel 71. Information so reported is provided as a courtesy to competitors and does not alter the competitors' responsibility to observe the RC's visual signals, which govern the conduct of the racing. Errors or omissions by the observer, or a competitor's failure to hear an observer's report, will not be grounds for granting redress.

17. AWARDS

- a. The **COM. ED THEISEN TROPHY RACE** will award flags to 1st, 2nd, and 3rd place in each class.
- b. The **Fall Series** will award flags to 1st, 2nd, and 3rd place in each class, for the series as a whole. The classes for race 1 (COM. ED THEISEN TROPHY RACE) may differ from those for races 2-5. If that is the case, corrected finishing times from race 1 will be used to "re-score" race 1, utilizing the classes assigned for the series as a whole (races 2-5). Finishes for boats that only register for the COM. ED THEISEN TROPHY RACE will NOT be scored for the Fall Series awards.



marks to Port Com. Ed Theisen Trophy Race & Race 5				
	Mark	Location	Bearing to Mark	Distance (NM)
	Start	42:24.75N * 82:51.52W		
	ET Mark SE, N	42:28.09N * 82:48.03W	46 Degs	3.8
	ET Mark NW, L	42:29.81N * 82:50.62W	319 Degs	2.6
	Finish	42:24.75N * 82:51.52W	193 Degs	4.7
marks to Starboard				
	Mark	Location	Bearing to Mark	Distance (NM)
	Start	42:24.75N * 82:51.52W		
	ET Mark NW, L	42:29.81N * 82:50.62W	13 Degs	4.7
	ET Mk SE, N	42:28.09N * 82:48.03W	139 Degs	2.6
	Finish	42:24.75N * 82:51.52W	226 Degs	3.8
Bearings are Magnetic and Locations are approximate.				