

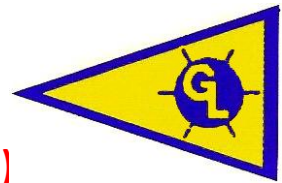
# Great Lakes Yacht Club

## 40th - 1+1 & 38th Single-Handed Regatta

### Sailing Instructions

Sunday, June 7, 2026

First Warning Signal at 1055hrs (10:55am)



#### GLYC FLAG OFFICERS

Commodore	Michael Banks
Vice Commodore	Steve Murdock
Rear Commodore	Delphine Cooley
Secretary	Werner Eckardt

#### RACE COMMITTEE

Bob Mann, Chair	Jeff Golding, 1+1 Race Chair
Jim Hanley	Barney Mathie
Jim Rapelje	Com. Mike McGuire
Tom Scherr	Jacob Spinks
Com. Frank Stellingwerf	

- 1. RULES AND MANAGEMENT:** Great Lakes Yacht Club (GLYC) is the Organizing Authority (OA) for the Regatta. The Regatta will be governed by the rules as defined in the Racing Rules of Sailing for 2025-2028 (RRS).
- 2. NOTICES TO COMPETITORS** Notices to competitors will be posted on the official notice board, located on the GLYC web site [www.greatlakesyc.com](http://www.greatlakesyc.com), under "1+1 Regatta".
- 3. CHANGES IN SAILING INSTRUCTIONS:** Changes in sailing instructions will be posted at [www.greatlakesyc.com](http://www.greatlakesyc.com), under "1+1 Regatta" and on the "Official Notice Board" outside the GLYC office.
- 4. STARTING SEQUENCE:** Classes will start in the order in which they are listed on the class splits at [www.greatlakesyc.com](http://www.greatlakesyc.com), under "1+1 Regatta," and on the official notice board outside the GLYC office. The Class Flag will be designated by numbers 1, 2, 3, 4, etc. that correspond to the class splits.
- 5. AGREEMENT TO ASSUME RISK:** In consideration of being permitted to enter this regatta and being fully knowledgeable of the risks of sailing as a competitive sport, all contestants voluntarily assume all risk associated with participating in this event. It shall be the sole and inescapable responsibility of the skipper of the yacht to decide whether to start, to continue or finish the race. The skipper must assure that all safety equipment is properly maintained and stowed and know how to use same.
- 6. CREW:** Yachts registered in the 1 + 1 classes shall be manned by two (2) adequate and capable crew; single handing is not permitted. Yachts registered in the single handed classes shall be manned by a single adequate and capable sailor. However, an additional person designated as "**Press**" may be aboard in any class but may **not** perform any function that improves that boat's performance during the race. The decision that the crew is adequate and capable is the sole responsibility of the skipper of each yacht; however, the Race Committee reserves the right to exclude boats which in their judgment are not adequately manned.

- 7. JAM CLASS REQUIREMENTS:** No spinnakers, staysails, double head rigs, or oversize whisker poles are allowed.
- 8. Jack & Jill CLASS REQUIREMENTS:** Two or more boats must register as Jack & Jill racers for there to be such a class and for flags to be awarded. They can be mixed
- 9. RADIO MONITORING:** Yachts shall monitor channel 72 while racing.
- 10. REQUIRED EQUIPMENT:** Each entrant shall carry the required United States Coast Guard equipment.
- 11. PERSONAL SAFETY:** A USCG approved life vest with whistle attached **MUST** be worn by all persons on board while racing. It is recommended that a safety harness be worn and attached to the yacht while racing.
- 12. SPECIAL AIDS:** The use of electronic navigation aids (e.g., GPS, Plotters) are permitted without penalty. Solo racers may also use self-steering devices (autopilots).
- 13. STARTING AND FINISHING LINES:** The starting area is located at the LSSC 'G' mark, between it and the orange flag on the Committee boat. The finishing line shall also be between the orange flag on the Race Committee boat and the LSSC 'G' mark.
- 14. MARKS:** Marks of the course are the Huron Point Buoy (1PH), the LSSC 'N' mark, and the LSSC 'G' mark. See course chart on page 3 for approximate mark locations.
- 15. COURSE –**
- A. Marks to Starboard (Green Flag on Committee Boat)** Sail from the starting line to the Huron Point Buoy, then to the LSSC 'N' Mark, then to the finish between the start 'G' Mark and the orange Flag on the Committee Boat. All rounding marks are to starboard. Course length is approximately 14.4 nm (See Course Chart on page 3).
- B. Marks to Port (Red Flag on Committee Boat)** Sail from the starting line to the LSSC 'N' Mark, then to the Huron Point Buoy, then to the finish between the start 'G' Mark and the orange Flag on the Committee Boat. All rounding marks are to port. Course length is approximately 14.4 nm (See Course Chart on page 3).
- 16. SHORTENING COURSE**
- A. Prior to the start:** the Race Committee boat shall display **Code Flag 'A'**: Sail to the first mark passing it on the starboard side, then directly back to the finish.
- B. After the start:** When a race committee boat (identified by its display of an 'RC' flag) in the vicinity of a mark displays **Code flag 'S'**: Finish the race by sailing between the nearby course mark and the Race Committee boat which is displaying the 'S' flag. The race committee may announce the shortened race by radio broadcast.
- 17. COMMITTEE BOAT PROTECTION MARK:** There may be a protection mark (inflatable buoy, green) approximately 20 feet from the Committee Boat. If a yacht touches this limit mark or the committee boat, or passes between this mark and the Committee Boat, she shall have in effect touched a mark.
- 18. RESTRICTED AREA:** All yachts shall keep clear of the restricted area (a rectangular area approximately 200 feet back of the starting line) and of the first leg of the course before the starting signal of the class ahead. A yacht which has finished shall keep clear of the finishing line and all other yachts which have not finished.
- 19. PROTESTS:** Submit a protest form **electronically** in accordance with US Sailing Rules, to [GLYCRace@gmail.com](mailto:GLYCRace@gmail.com). Notify the Race Committee within two hours of finishing. The Race Committee will provide notification of hearing schedule to those involved.
- 20. TIME LIMIT:** There will be no time limit in which to finish this race. The Race Committee may not be on station to record finishing times after 1700. Therefore, skippers finishing after that time are to record their own finishing time and report it to 1+1 Regatta Race Chair Jeff Golding at 248.514.0410 or GLYC Race Chair Bob Mann at 313.530.4495.

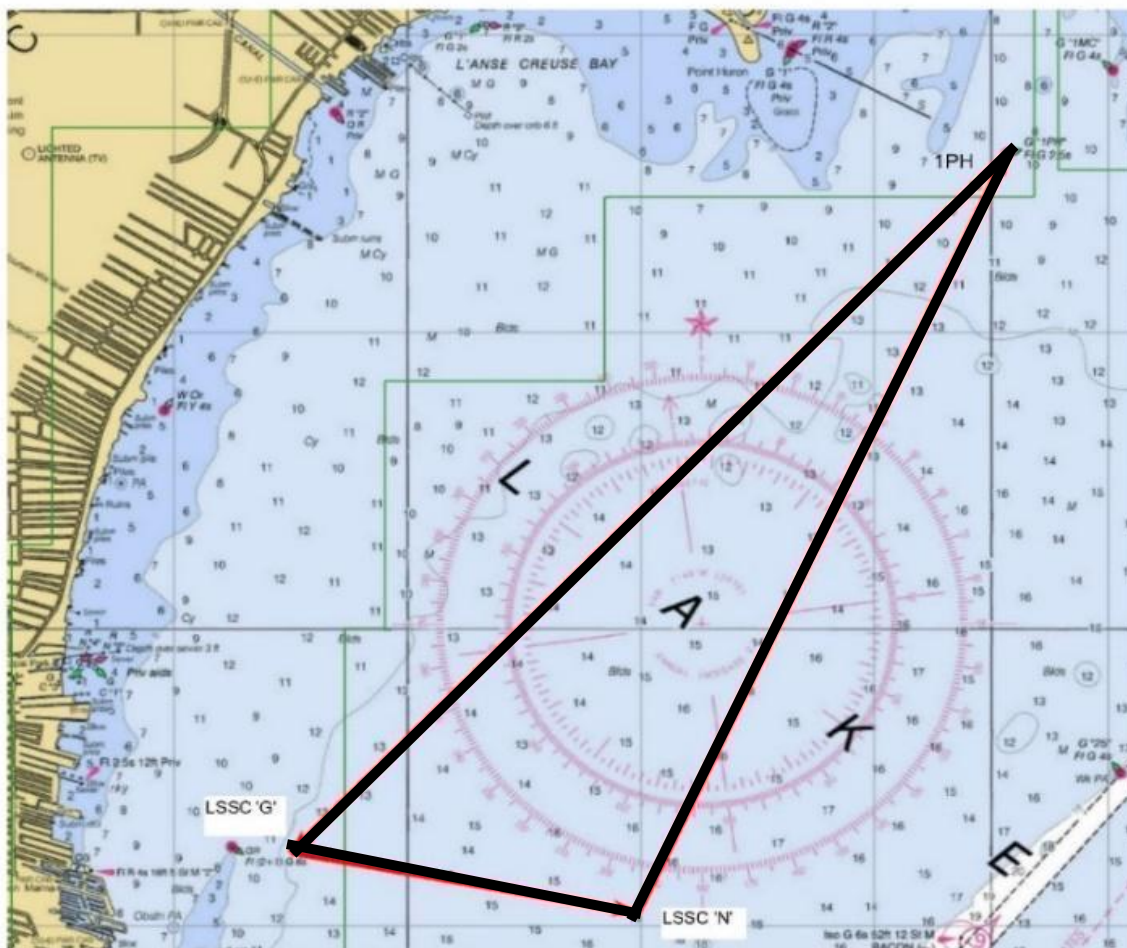
**21. WITHDRAWALS:** Participants withdrawing from the race are required to notify the Race Committee via VHF radio (Channel 72) or telephone: 1+1 Regatta Race Chair Jeff Golding at 248.514.0410 or GLYC Race Chair Bob Mann at 313.530.4495 at their earliest opportunity. Failure to notify the Race Committee may preclude acceptance of entry in future GLYC sponsored events.

**GENERAL INFORMATION:** NOR, SI's, and Class Splits will be posted at [greatlakesyc.com/1-1-regatta](http://greatlakesyc.com/1-1-regatta). Direct questions or for further information contact 1+1 Regatta Race Chair Jeff Golding at 248.514.0410 or GLYC Race Chair Bob Mann at 313.530.4495, or [GLYCRace@gmail.com](mailto:GLYCRace@gmail.com).

**All are welcome to GLYC Awards Presentation & Barbeque  
on the GLYC Patio following racing. (BYOB).**

**Course Chart (listed positions are approximate)**

Marks to Port ( <b>RED</b> flag)			
Mark	Leg (nm)	Heading (mag)	Position
LSSC 'G' mark (start)			N 42° 28.50' / W 082° 51.00'
LSSC 'N' mark	2.2 nm	108°	N 42° 28.09' / W 082° 48.03'
1PH (Huron Pt Buoy)	5.6 nm	32°	N 42° 33.21' / W 082° 44.87'
LSSC 'G' mark (finish)	6.5 nm	231°	N 42° 28.50' / W 082° 51.00'



Marks to Starboard ( <b>GREEN</b> flag)			
Mark	Leg (nm)	Heading (mag)	Position
LSSC 'G' mark (start)			N 42° 28.50' / W 082° 51.00'

1PH (Huron Pt Buoy)	6.5 nm	51°	N 42° 33.21' / W 082° 44.87'
LSSC 'N' mark	5.6 nm	212°	N 42° 28.09' / W 082° 48.03'
LSSC 'G' mark (finish)	2.2 nm	288°	N 42° 28.50' / W 082° 51.00'